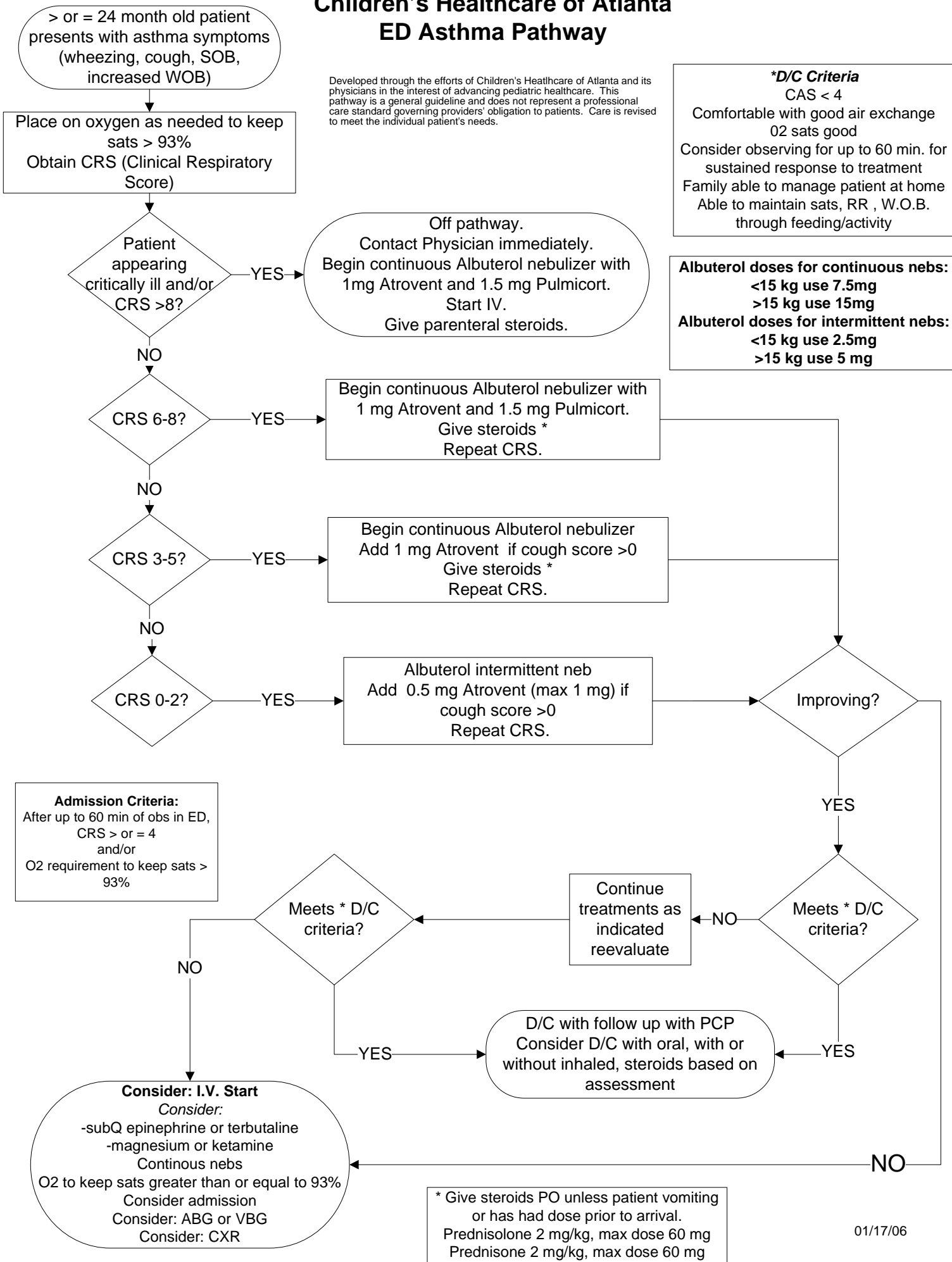


Children's Healthcare of Atlanta ED Asthma Pathway

Developed through the efforts of Children's Healthcare of Atlanta and its physicians in the interest of advancing pediatric healthcare. This pathway is a general guideline and does not represent a professional care standard governing providers' obligation to patients. Care is revised to meet the individual patient's needs.



***D/C Criteria**

CAS < 4
Comfortable with good air exchange
O2 sats good
Consider observing for up to 60 min. for
sustained response to treatment
Family able to manage patient at home
Able to maintain sats, RR, W.O.B.
through feeding/activity

Albuterol doses for continuous nebs:
<15 kg use 7.5mg
>15 kg use 15mg
Albuterol doses for intermittent nebs:
<15 kg use 2.5mg
>15 kg use 5 mg

Admission Criteria:
After up to 60 min of obs in ED,
CRS > or = 4
and/or
O2 requirement to keep sats >
93%

* Give steroids PO unless patient vomiting
or has had dose prior to arrival.
Prednisolone 2 mg/kg, max dose 60 mg
Prednisone 2 mg/kg, max dose 60 mg