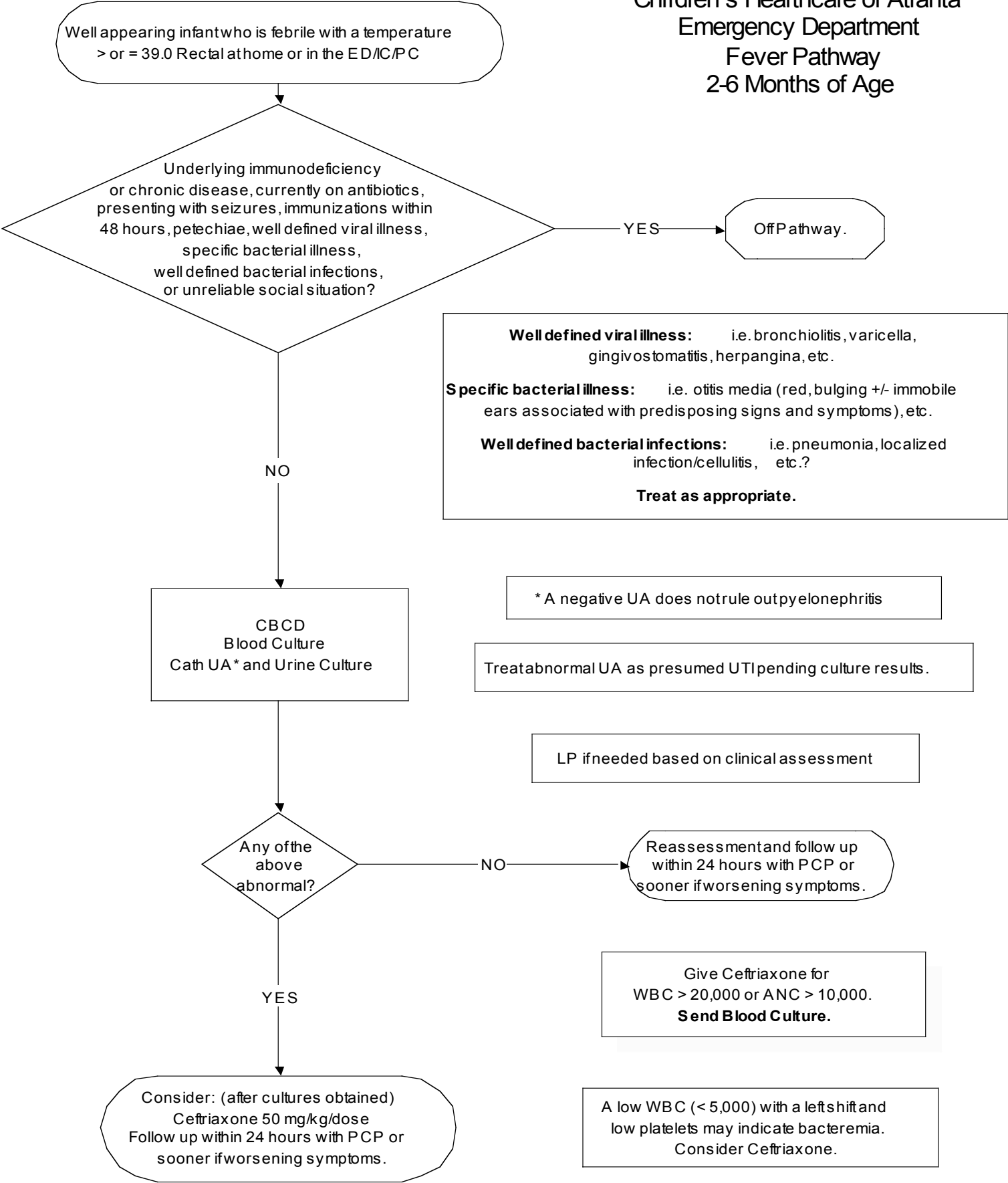


Children's Healthcare of Atlanta
 Emergency Department
 Fever Pathway
 2-6 Months of Age



Developed through the efforts of Children's Healthcare of Atlanta and its physicians in the interest of advancing pediatric healthcare. This pathway is a general guideline and does not represent a professional care standard governing provider's obligation to patients. Care is revised to meet the individual patient's needs.